

This webinar will start in a few moments ...

Microsoft Fabric

A Whole New Way to Work

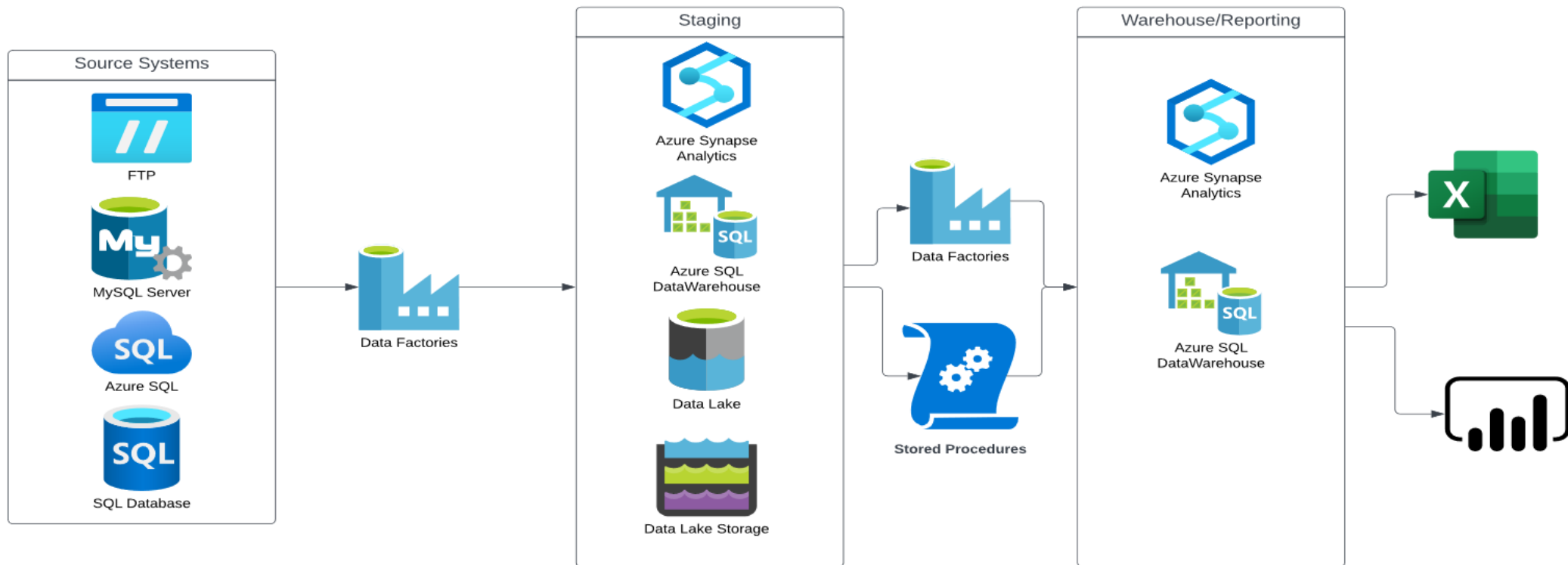


25 January 2024

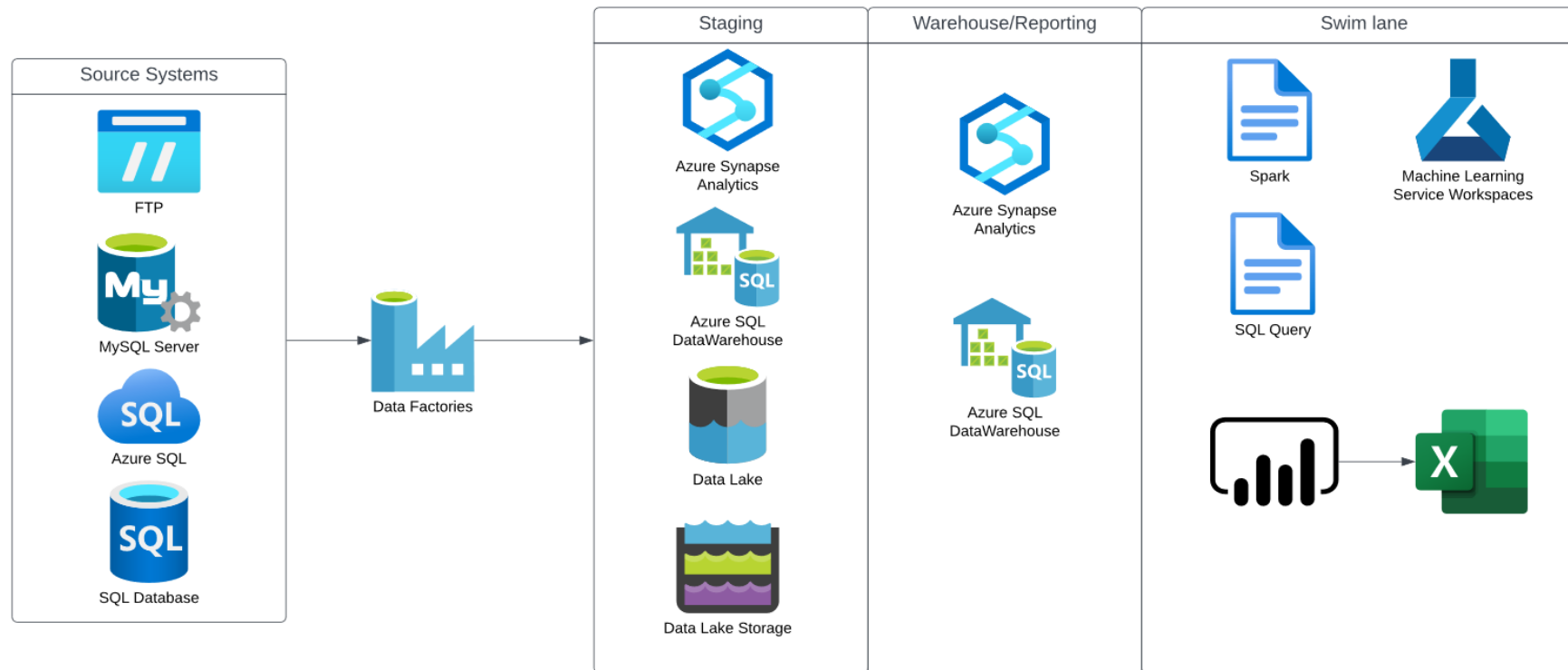
- All-in-one analytics solution
- Highly integrated
- Software as a service



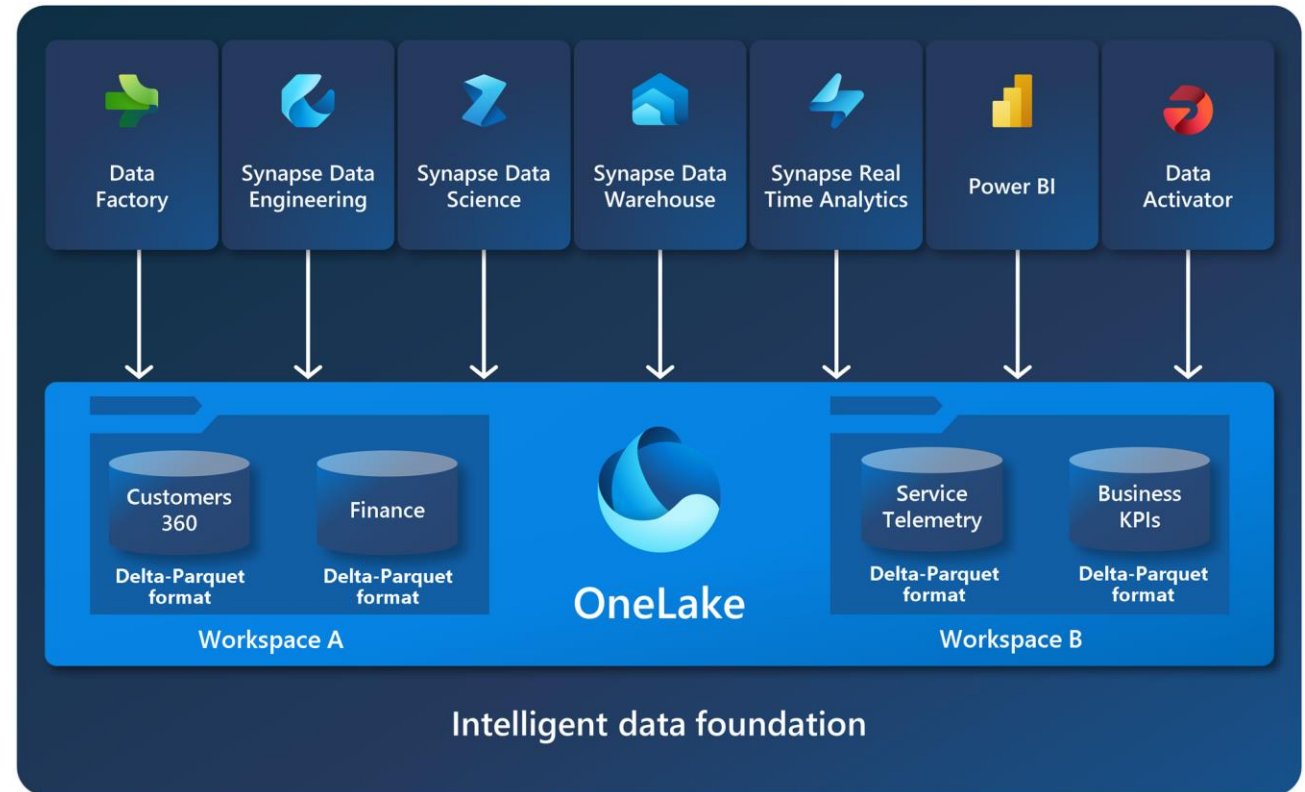
- Segmented, sometimes multiple software vendors
- Lots of config
- Unexpected restrictions



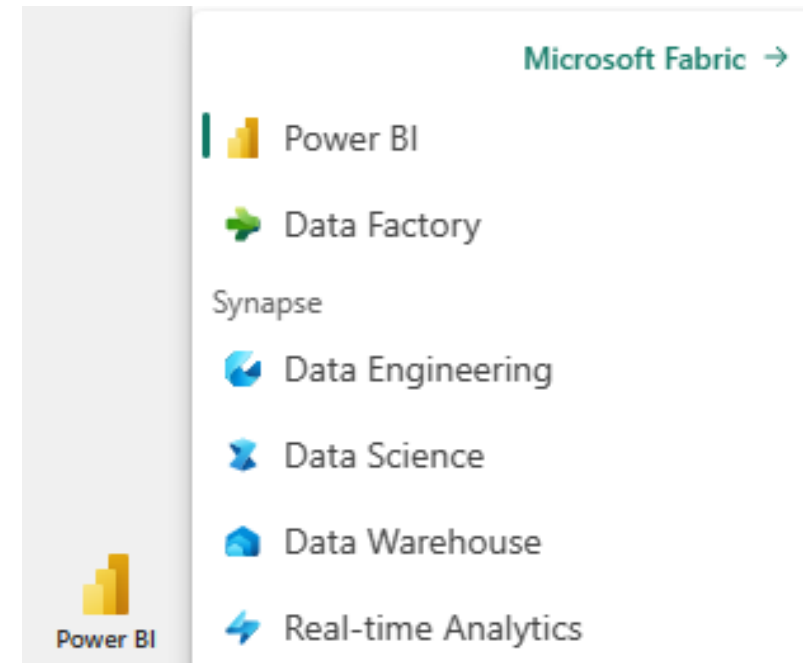
- No more artificial boundaries
- Engineers, analysts, business users all work in the same space
- Shortcuts



- Lake-centric architecture
- ADLS Gen 2
- Delta-Parquet
- Multiple workspace
- Multiple engines, single dataset
- Analysis Services



- Specific persona and a specific task
- Unified into a single platform
 - Synapse Data Engineering
 - Synapse Data Warehouse
 - Synapse Data Science
 - Synapse Real-Time Analytics
 - Data Factory
 - Power BI



- Data Science and Engineering
 - AI Enhanced toolset
 - Code completion, automation, support industry standards
- Data Factory
 - AI Enhanced toolset
 - Intelligent code generation
 - Code Explanations
- Power Bi
 - Generative AI
 - Summarize report page

- Capacity
- SKUs Under F64
 - Pro/Premium Per User to consume Power BI content
 - No Free Power BI users
- Capacity can be paused
- 1 Year Reservation ~41% cheaper

SKU*	Capacity Units (CU)	Power BI SKU	Power BI v-cores	Pay-as-you-go
F2	2	-	0.25	\$350.40
F4	4	-	0.5	\$700.80
F8	8	EM/A1	1	\$1 401.60
F16	16	EM2/A2	2	\$2 803.20
F32	32	EM3/A3	4	\$5 606.40
F64	64	P1/A4	8	\$11 212.80
F128	128	P2/A5	16	\$22 425.60
F256	256	P3/A6	32	\$44 851.20
F512	512	P4/A7	64	\$89 702.40
F1024	1024	P5/A8	128	\$179 404.80
F2048	2048	-	256	\$358 809.60

Synapse	Fabric
*USD 1976.70	*USD 288.80
East US	East US
24/7 Uptime	24/7 Uptime
1 TB Storage	1 TB Storage
Power BI is an external tool	Natural power BI integration
Connection to lake storage requires configuration	Implicit connection to lake storage
Multiple tools and environments	End-to-end Environment

*As Per the Azure Pricing Calculator – January 2024

- Storage - \$0.0274/GB/month
- Bandwidth (Coming Soon)– Standard Azure bandwidth costs

Microsoft Azure Estimate

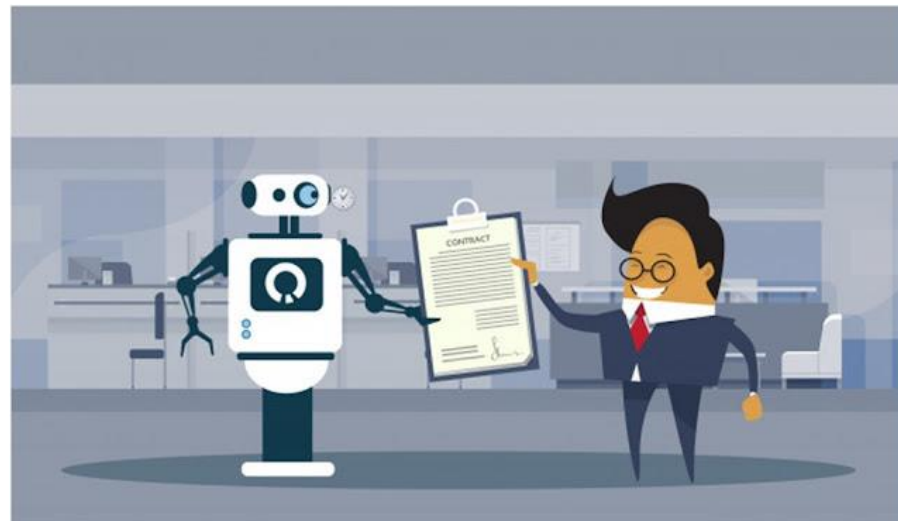
Service category	Service type	Region	Description	Estimated monthly cost
Databases	Azure Synapse Analytics	East US	Tier: Compute Optimised Gen2, Dedicated SQL Pools: DWU 100 x 1 Month, 1 TB of storage; Serverless SQL Pools: 1 TB of data queried; Apache Spark Pools: Memory optimised: (1 Instance(s), Small x 31 Hours), Hardware accelerated: (1 Instance(s), Large x 1 Hours); East US Region, 100 GB of data collected per day, 7 days of Hot Cache, 30 days of total retention, 7 times estimated data compression, 730 Hours of 2 x Extra Small (2 vCores) Engine Instances, 730 Hours of 2 x 1 vCore Data Management Instances	\$1 976.70
Analytics	Microsoft Fabric	East US	F2, 2 Capacity units x 1 Month, OneLake storage 1,000 GB	\$288.80

Disclaimer

All prices shown are in United States – Dollar (\$) USD. This is a summary estimate, not a quote. For up to date pricing information please visit <https://azure.microsoft.com/pricing/calculator/>
 This estimate was created at 1/22/2024 12:34:24 PM UTC.

- Scale data and analytics
- Make data accessible
- Integrated and unified data
- Accessible insights that scale
- Accelerated time to value
- Transform and analyze all your Microsoft data
- Increase adoption

Do you use Microsoft data toolsets?



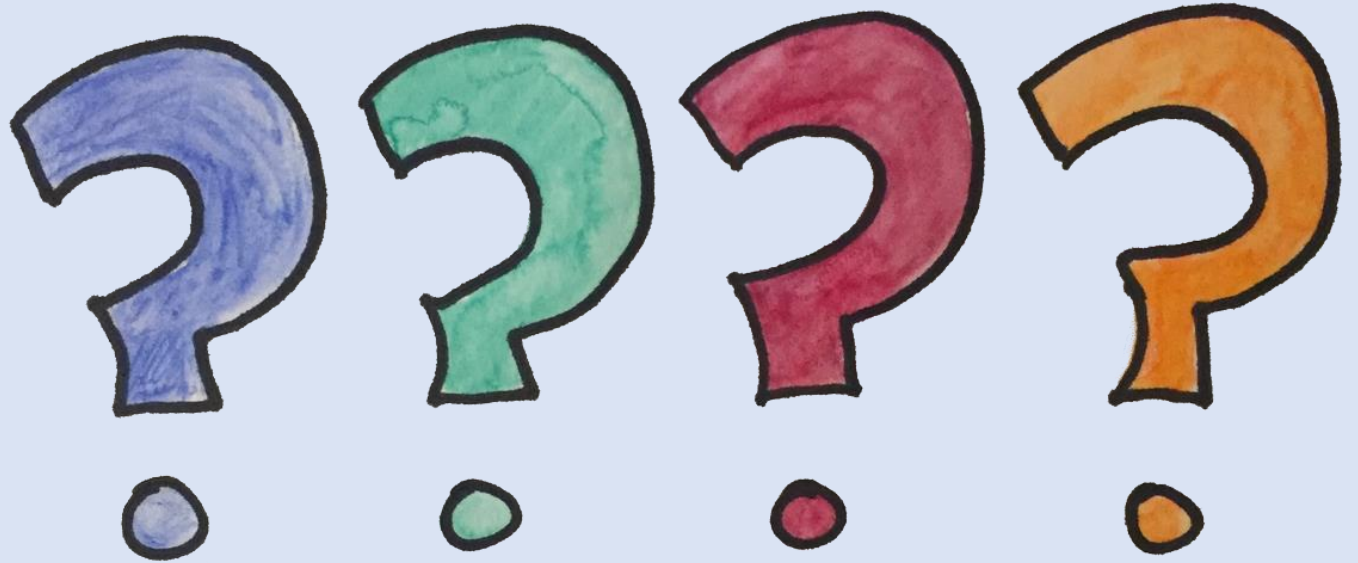
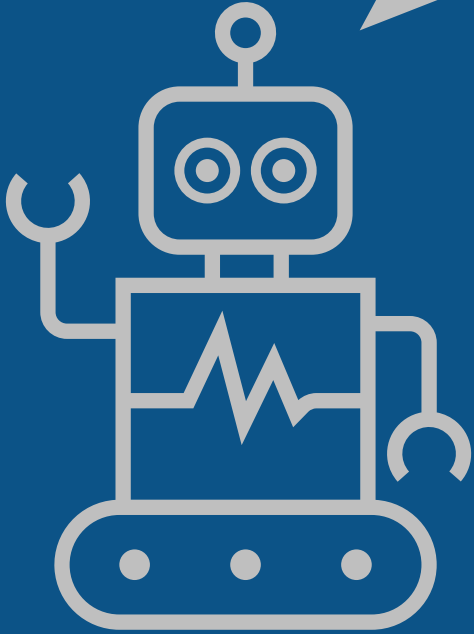
Would you like a free hands-on workshop with our team?

Call +27 10 501 0800 or reach us at info@firsttech.digital to get started!

Do you use any of the following Microsoft data toolsets?

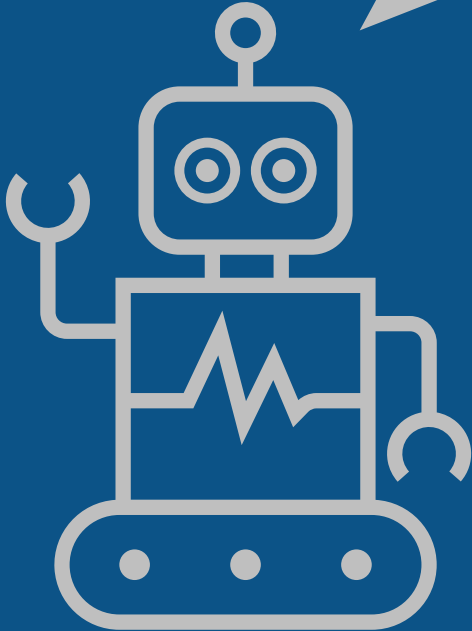
- SSIS
- Azure ADF
- Azure Datalake
- Azure File Storage
- Azure Synapse Analytics
- Microsoft Fabric

Questions?



Microsoft Fabric

Thank you



Getting Started:

www.microsoft.com/en-us/microsoft-fabric

Connecting to Azure Billing:

azure.microsoft.com/en-us/pricing/details/microsoft-fabric/

Contact us:

www.firsttech.digital/data-analytics



Microsoft Fabric